

UNIT TOILETS



- Wall Panels
- Ceiling Panels
- Unit Toilets**
- Marine Doors
- Floating Floors
- Furniture
- Unit Cabins
- Interior Furnishings
- Modular Systems
- Marine Engineering
- Onshore Plants



Construction of toilets can be very expensive and time consuming for Shipyards and Owners considering the infrastructure requirements (Dry-docks, Slipways etc.) and the high labor costs coupled with low productivity.

STACO Unit Toilets can overcome these problems as these Unit Toilets can be delivered in different sizes and designs according to customer specifications. The STACO Toilet Units are manufactured with special focus on design details to ensure maximum space utilization, proper functioning and long durability so that they do not become worn out or rotten in a few years after delivery.



With many years of experience and specialized competence, STACO Unit toilet is ideal for marine accommodations, from cruise ships to offshore installations. STACO Unit toilet, whether standard or custom made, is manufactured according to the strictest rules and regulations and are fabricated from only first class materials. In our design, the emphasis is on using durable solutions to ensure maximum quality.

Comfort and well-being of our customers, whether being a ship owner, ship yard or end user.

The units are manufactured with great deal of consideration given

to the ease of handling and installation.

Throughout the production process the units are subjected to strict quality control to ensure that all of supplies conform to our policy of supplying only first class quality.

Bottom may also be made of GRP material.

STACO manufactures four basic types of Toilet Unit Models.

These are Shower Unit, Bath Unit and Shared Unit and public unit.

The 'Shower Type' contains a toilet bowl, a wash-basin and a shower cabin, the 'Bath Type' has a bath tub instead of a shower cabin and the typical 'Shared Type' is for two cabins and has a toilet bowl, a wash-basin and a shower cabin and

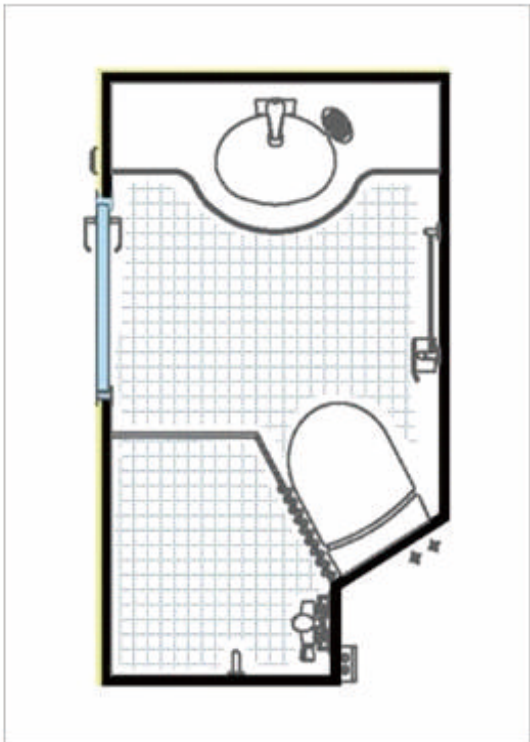
the 'Public Type' has a toilet bowl and a wash basin but no shower cabin. In addition all units have equipment and

accessories like mixing taps, shower mixers, cabinets paper holders, soap holders, towel and grab rails, etc.

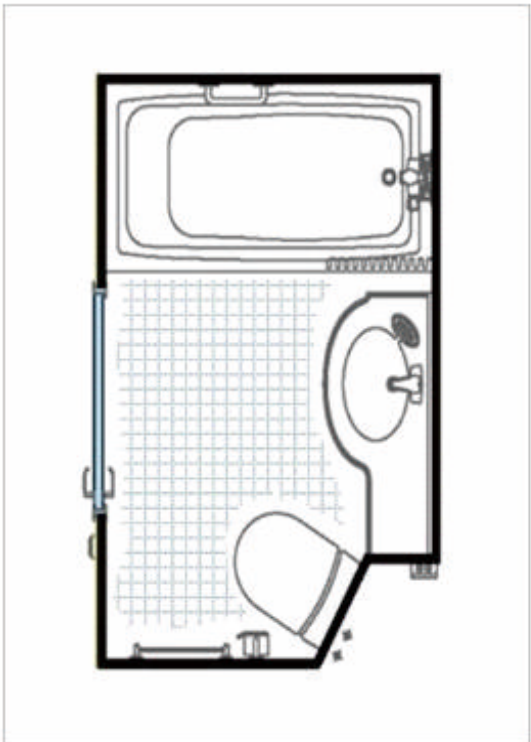
See sketches attached on next page.



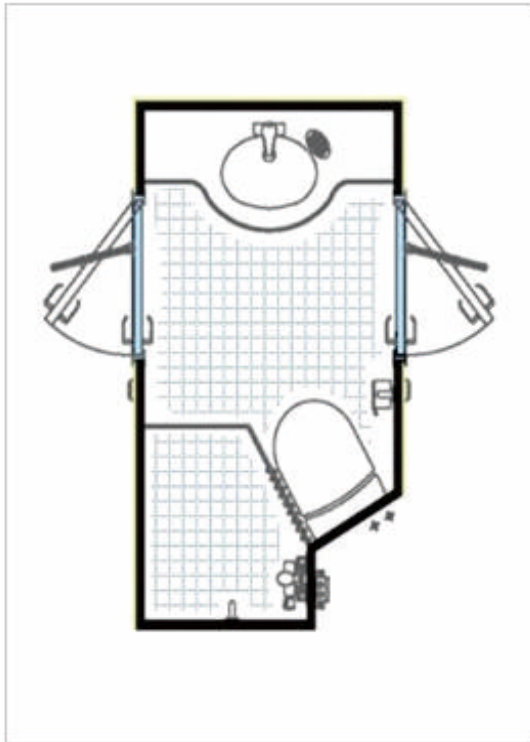
Typical Design



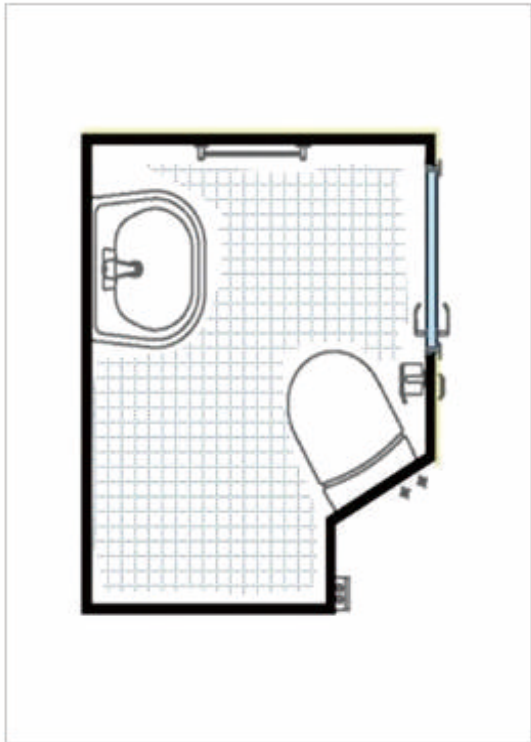
SHOWER TYPE



BATH TYPE



SHARED TYPE



PUBLIC TYPE

Details



WASH BASIN, WATER COSET, SHOWER AREA VIEW



SHOWER UNIT

Accessories



SOAP DISH



TUMBLER HOLDER



TOWEL BAR



PAPER HOLDER



SPARE PAPER HOLDER



TOILET BRUSH & HOLDER



COAT & HAT HOOK



GRABRAIL



CORNER SHELF



GLASS SHELF



Installation

Each standard unit is delivered with four square tubes for easy lifting and locating on board.

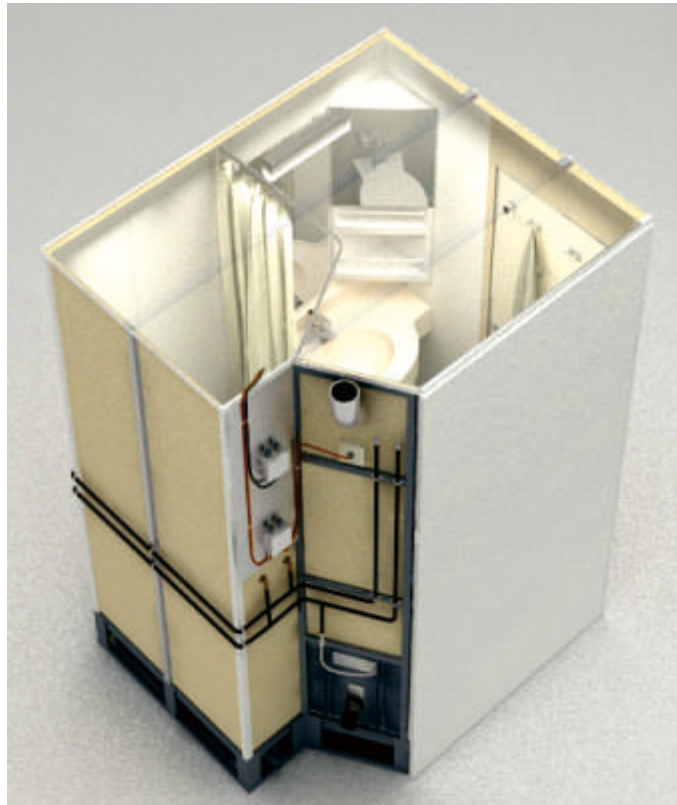
A specially designed lifting frame is used for hosting by crane.

After lifting on board, transportation wheels are fitted into the tubes. The units are then jacked up and transported to their final position.

Each unit is delivered with one adjustable leg at each corner to allow for leveling.

STACO unit toilet is complete when delivered, so after fixing them to the deck you only need connect the water, drainage and electricity to work them.

STACO units have been successfully installed on numerous vessels around the world, whether they are on a luxury cruise liner, commercial vessel or offshore platform.



■ ON-BOARD CONNECTION POINT



ELECTRIC CONNECTION



PIPING CONNECTION