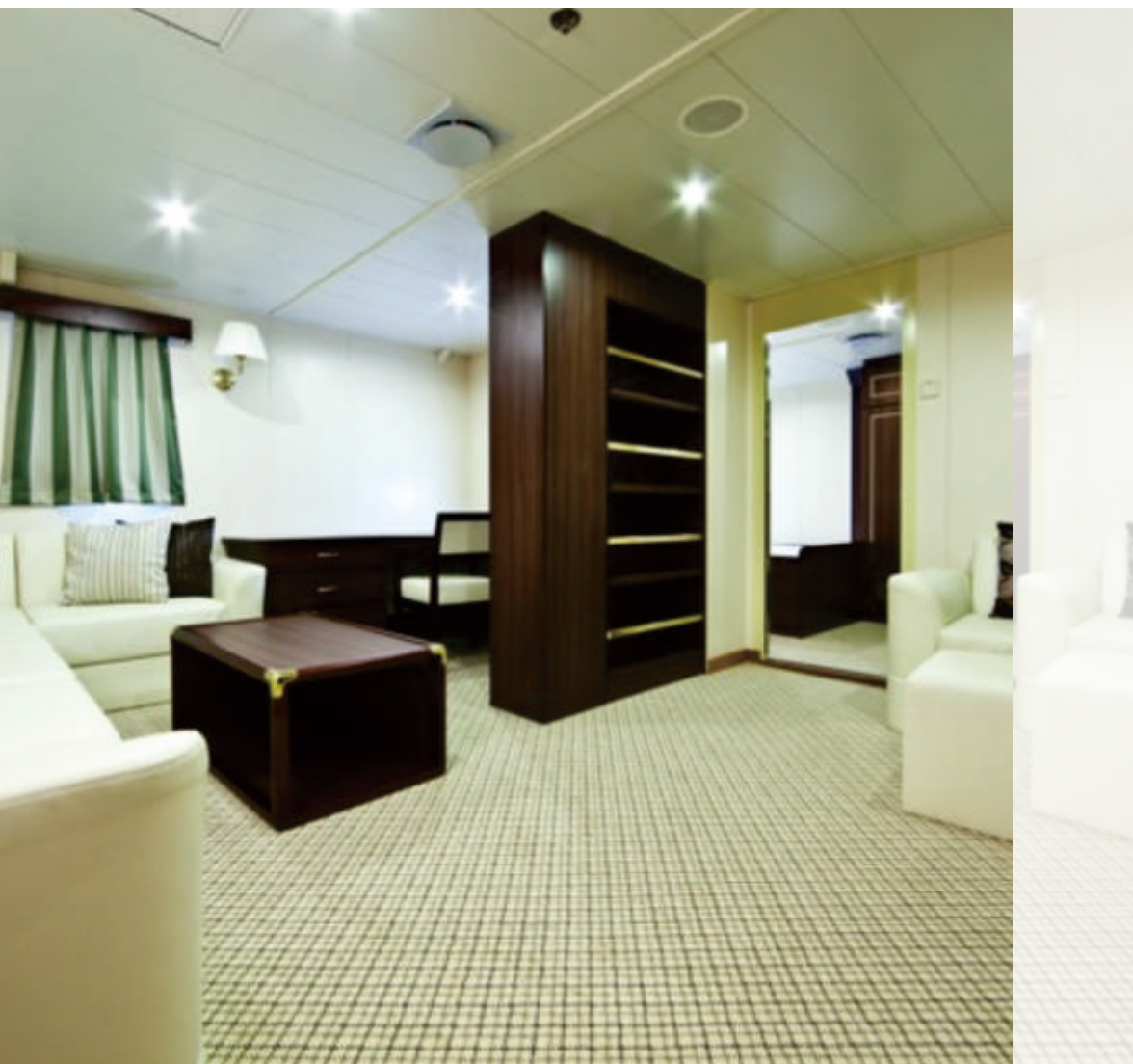


UNIT CABINS



Wall Panels

Ceiling Panels

Unit Toilets

Marine Doors

Floating Floors

Furniture

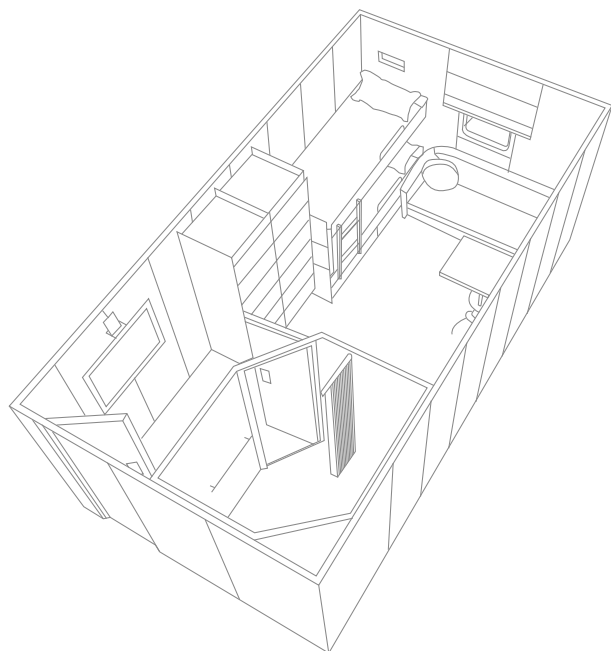
Unit Cabins

Interior Furnishings

Modular Systems

Marine Engineering

Onshore Plants



UNIT CABINS



STACO Unit Cabins are designed as factory fabrication units which can be easily transported and installed at any sites worldwide. STACO has extensive experience in designing and supplying Unit Cabins to many satisfied customers.

The Unit Cabin system is an ideal solution for Passenger Ships and wherever there is additional Unit cabin/s requirement specifically at offshore and on land.

Construction of a Unit Cabin in a factory under a clean and controlled environment has several advantages such as speedier building process, higher quality, design flexibility (customization) and a more economical product when compared to the stick-built construction in difficult site conditions.

The Unit Cabin is a frame construction. The walls, ceilings and doors of the unit cabins are made of galvanized steel covered with decorative PVC foil or lacquer coating and insulated with mineral wool.

The primary aim is to produce unit cabins in large quantities and delivered just in time when they are required at site as these can be assembled for usage at site within a very short period. Most of the works related to steel work, painting, electrical, piping, HVAC, Interiors etc. are completed in the factory leaving small works such as Cabin to Cabin insulation, connections and tests etc. to be completed at site.



STACO unit cabin system is designed as factory fabrication basis, and can be readily transported to sites worldwide.

Packaging in factory gives you the benefits of factory quality control; clean, conditioned assembly of construction; economics of factory labor; functional testing; and a product with predictable, guaranteed performance.

UNIT CABIN

CONVENTIONAL CABIN





CABIN





Passenger Ship Offshore L.Q.

Yard's Preparation for Prefabricated Cabin

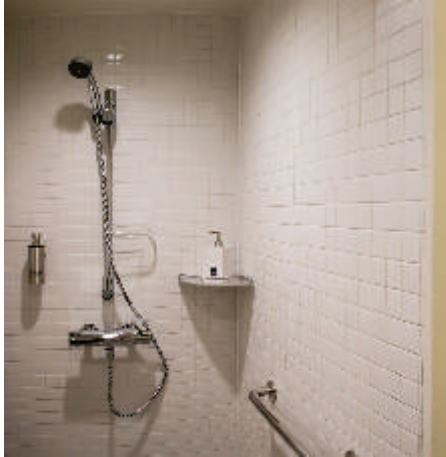
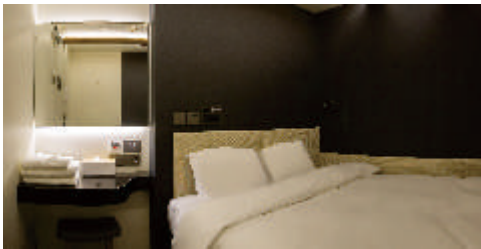
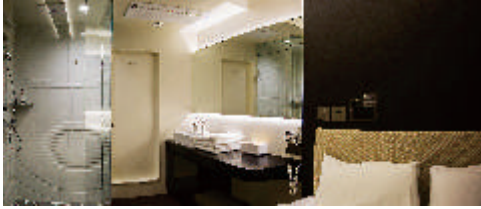


UNIT CABIN





UNIT CABIN



UNIT CABIN
CONVENTIONAL CABIN

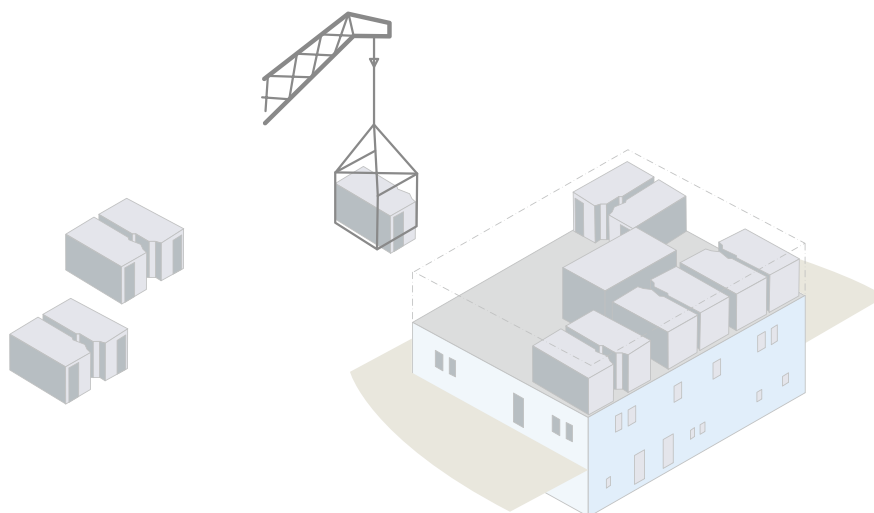


UNIT CABIN
CONVENTIONAL CABIN



Advanced Prefabricated System

The consistency of its expertise is one of STACO's major assets. Boasting a well-known capacity to adapt to each case, however different and ever changing, in the most varied sectors imaginable, the group has succeeded in making optimum use of its skills and resources to propose highly innovative solutions. STACO can, therefore, answer the growing need from companies for flexibility, and offer imaginative solutions in the trend towards the outsourcing of non-strategic functions with in their business activity.



Custom-Engineered Prefabricated Cabin Systems

STACO's skilled team of engineering and design professionals thoroughly evaluates each custom enclosure request. A Prefabricated Cabin System is designed and a preliminary dimensional drawing is generated. Our Designers often work directly with the Shipyard and Owner of the ship being enclosed to ensure all aspects of our design meet their requirements. In this field, STACO supports its client's idea with solutions, which are tailored, flexible and based upon the modular concept and flexibility.



Optimum Space Use

Much space can be saved with our modular systems. Our Prefabricated Cabin System, for instance, needs only one junction box required by conventional system. The individual components can be adapted flexibly to the particular functions and working conditions. In this way, working procedures can be easily and cost-efficiently linked and simplified. Space, Time, Cost are a company resource just like human and technological resources.



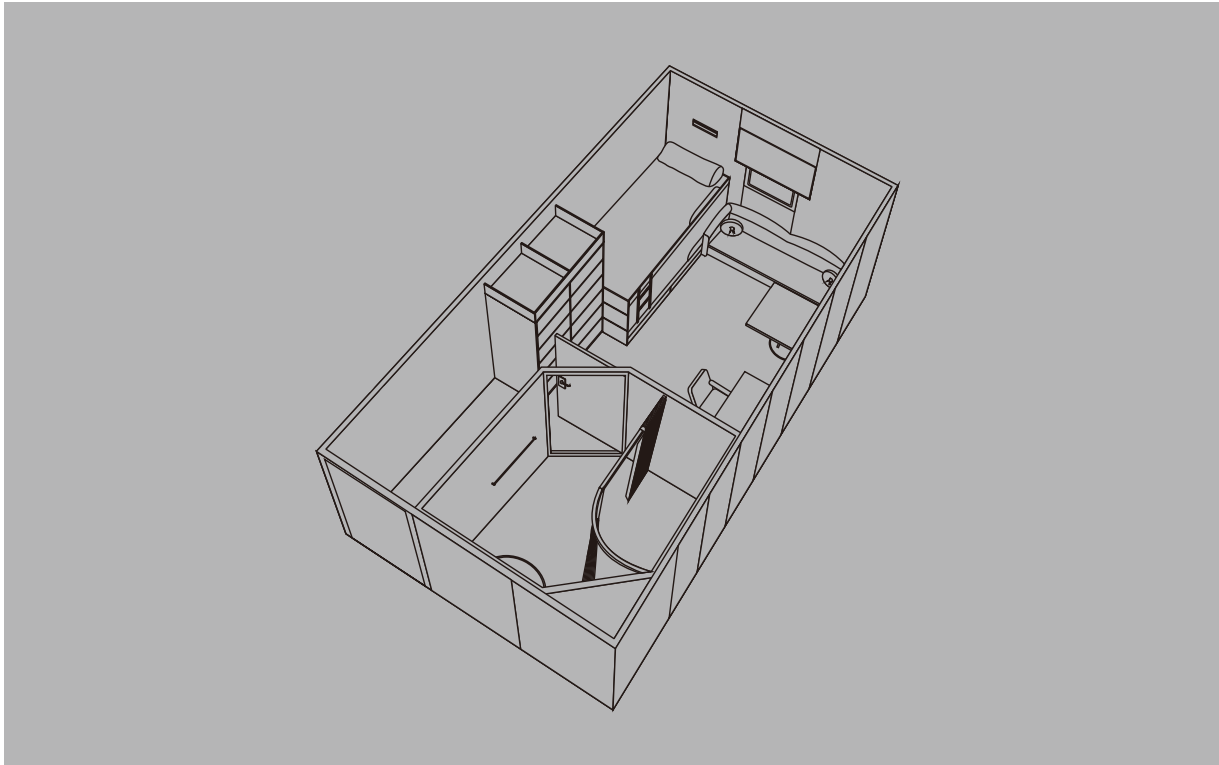
Over and above simply making a building available, STACO offers its clients a total service including design, production, maintenance, and associated services.



Installation

Description:

Prefabricated Cabin Units are factory-built staterooms in which panels – whole walls with windows, doors, wiring, and outside siding – are transported to the site and assembled. Panels are made from mineral wool with PVC laminated steel plate and structural membrane. The panels are lightweight and already filled with insulation when they arrive on the site. The Prefabricated Cabin Units must meet the World of Marine Classification Rules of where they are fabricated.



Advantages :

Prefabricated Cabin Units are built by skilled carpenters, plumbers, and electricians in an ideal work environment, enhanced by state-of-the-art equipment. This results in a speedier building process, higher precision, customization and design flexibility, and reduction of building materials to be exposed to the elements. The combination of these factors results in faster on-site completion than stick-built method.

Another advantage in using any of the degrees of prefabrication is that builders have all the components for a new cabin delivered to the site on truckloads, which eliminated having to order long list of materials, store and keep inventory of numerous deliveries from number of suppliers. The time required for ordering, storing and securing the materials is greatly reduced. Cleanup time and waste-hauling as also substantially reduced. Additionally, the quality and suitability of materials and design of the cabin are assured in easily controlled at the factory before working on the stateroom has begun.

